

MODEL	Unit	SQ-1140	SQ-1200	SQ-3250SW	SQ-3350SW
-------	------	---------	---------	-----------	-----------

GENERATOR

Type	–	Revolving field, brushless AC generator							
Frequency	Hz	60							
Standby Output	kVA (kW)	14.5 (14.5)	21.0 (21.0)	23.8 (19.0)	27.5 (22.0)	15.8 (15.8)	33.3 (26.7)	38.5 (30.8)	22.2 (22.2)
Prime Output	kVA (kW)	13.6 (13.6)	20.0 (20.0)	21.6 (17.3)	25.0 (20.0)	14.4 (14.4)	30.3 (24.2)	35.0 (28.0)	20.2 (20.2)
Voltage - Single Phase	V	120/240	120/240	120	277	120/240	120	277	120/240
Voltage - 3 Phase	V	–	–	208	480	–	208	480	–
Armature Connection	–	Series	Series	Star with neutral	Zig-Zag	Star with neutral	Zig-Zag		
Phase / Wire	–	1/4	1/4	3/12		3/12			
Power Factor	–	1.0	1.0	0.8	1.0	0.8	1.0		
No. of Poles	–	4							
Insulation	Class	H							
Voltage Regulation	%	1.5 (No load to full load)							
Type of Coupling	–	Direct coupled							

AMPS

Single Phase 110V	A	–	–	–	–	–	–	–	–
Single Phase 120V	A	56.6 x 2	83.3 x 2	–	–	60 x 2	–	–	84.2 x 2
Single Phase 240V	A	56.6	83.3	–	–	60	–	–	84
Three Phase 208V	A	–	–	60	–	–	84.2	–	–
Three Phase 480V	A	–	–	–	30	–	–	42.1	–

NO. OF RECEPTACLE

5-15R (GFCI)	–	2	2	2	2
L5-30R	–	1	1	1	1
L14-30R	–	2	2	2	2

DIESEL ENGINE

Type	–	Vertical, liquid-cooled, 4-cycle diesel engine			
Model	–	D1703	V2203	V2203	V3300
No. of Cylinders	–	3	4	4	4
Bore x Stroke	mm (in.)	87 x 92.4 (3.43 x 3.64)	87 x 92.4 (3.43 x 3.64)	87 x 92.4 (3.43 x 3.64)	98 x 110 (3.86 x 4.33)
Displacement	L (cu. in.)	1.647 (100.5)	2.197 (134.1)	2.197 (134.1)	3.318 (202.5)
Engine Speed	rpm	1800			
Continuous Rated Output	kW (HP)	16.5 (22.4)	23.7 (32.2)	23.7 (32.2)	32.1 (43.6)
Lubricant (API classification)	–	above CD grade			
Oil Capacity	L (qts.)	5.6 (5.9)	7.6 (8.0)	7.6 (8.0)	13.2 (14.0)
Coolant Capacity	L (qts.)	5.5 (5.8)	6.3 (6.7)	6.3 (6.7)	8.2 (8.7)
Starting System	–	Electric - 12 volt DC			

SET

Fuel	–	Diesel fuel No.2 (ASTM D975)				
Fuel Consumption	at Full Load	L/h (gal./h)	4.8 (1.3)	6.9 (1.8)	6.7 (1.8)	9.1 (2.4)
	at 3/4 Load	L/h (gal./h)	3.7 (1.0)	5.3 (1.4)	5.2 (1.4)	7.0 (1.8)
	at 1/2 Load	L/h (gal./h)	2.8 (0.7)	4.0 (1.1)	3.9 (1.0)	5.2 (1.4)
	at 1/4 Load	L/h (gal./h)	2.0 (0.5)	2.9 (0.8)	2.8 (0.7)	3.8 (1.0)
Fuel Tank Capacity	L (gal.)	62.0 (16.4)	62.0 (16.4)	62.0 (16.4)	68.0 (18.0)	
Continuous Operation Hours	at Full Load	h	12.9	9.0	9.3	7.5
	at 3/4 Load	h	16.8	11.7	11.9	9.7
	at 1/2 Load	h	22.1	15.5	15.9	13.1
	at 1/4 Load	h	31.0	21.4	22.1	17.9
Battery (Ah/5h)	–	12V (55Ah)	12V (55Ah)	12V (55Ah)	12V (92Ah)	
Dimensions L x W x H	mm (in.)	1775 x 812 x 970 (69.9 x 32.0 x 38.2)	1825 x 812 x 970 (71.9 x 32.0 x 38.2)	1862 x 812 x 970 (73.3 x 32.0 x 38.2)	2072 x 892 x 995 (81.6 x 35.1 x 39.2)	
Approx. Net Weight	kg (lbs.)	680 (1499)	760 (1676)	780 (1720)	940 (2072)	
Sound Level (Full Load at 23 ft. [7m])	dB (A)	62	64	64	65	
Emergency Stop System	–	In case of abnormal: Oil pressure, water temperature, fan belt broken When the side cover and door open with running				

*Specifications are subject to change without notice.

KUBOTA SQ SERIES DIESEL ENGINE GENERATORS



4 Pole Single & Three Phase

Output Range: (Single Phase) 13.6 ~ 20.0 kW
(Three Phase) 13.6 ~ 28.0 kW

The Silent Partner that Goes Where You Go

Kubota introduces a new line of low noise, heavy-duty, 4-pole diesel generators, the SQ series.

Powered by Kubota's own cleaner emission and highly durable E-TVCS combustion system diesel engines, the SQ series ensure a much quieter, more efficient, and longer service life practically anywhere you go.

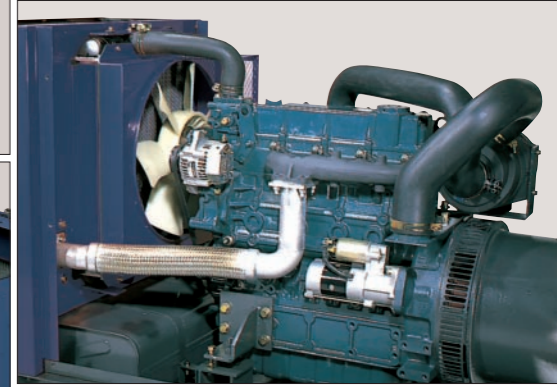


Super Quiet Performance
62-65 dB[A]



Improved Enclosure with a Noise Absorbing Duct

Noise within the generator unit has been lowered by improving the noise reduction enclosure and by adding a new noise absorbing duct with 3 air intake holes.



Quieter Cooling Fan

Kubota not only reduced fan related noise with this larger-diameter, slower-speed fan, but was also able to maintain the same cooling effect as one running at normal speed.

Over-Sized Muffler

Sound level has been lowered by the over-sized muffler.

Second Muffler (for V3300 only)

A special 2 stage muffler system is used in generators powered by V3300 to reduce noise even further.



SQ-1140



SQ-3350SW

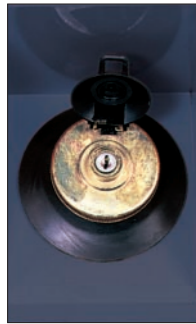
Extra-Long Air Cleaner Hose

A longer air cleaner inlet hose is used to keep the low frequency noise down.

Operator Friendly

Base Mounted Fuel Tank

The SQ series is equipped with large capacity bottom mounted fuel tanks to prevent fuel spills inside the enclosure. The locking fuel cap is placed to avoid damage and simplify refueling.



Automatic Air-Bleeding

Everytime the engine key is turned ON, air is automatically purged from the fuel system.

Locking Control Panel Door

Shields instrument panel from the elements and permits observation of all key functions without opening the door.



Compact and Easily Transport

The advanced design and superior engineering minimizes both space and weight. Transportability is improved with slots on each side of the machine for safe forklift truck transportation. Four tie down points and sturdy lifting eyes further enhance hoisting and transportation.



Comparison of Noise Levels

Model	dB (A)
SQ-1140	62
SQ-1200	64
SQ-3250SW	64
SQ-3350SW	65

Note:
(1) The measurements were made in dB(A) by applying the mean figure of the sound levels measured at 4 points from a distance of 7m.
(2) Testing method was done according to Jem 1420 standard.

Safety and Maintenance

Designed with Safety in Mind

The fully covered load center houses all the outlets, compression terminals and circuit breakers. To prevent inadvertent contact with the terminals, the receptacles are divided in a separate section. GFCI receptacles are standard equipment to further enhance operator safety.



Safety Door Interlocks

Safety door interlocks automatically shut down the engine if the load center doors are opened during operation. For safe, unattended operation, even the maintenance doors are equipped with safety interlocks.

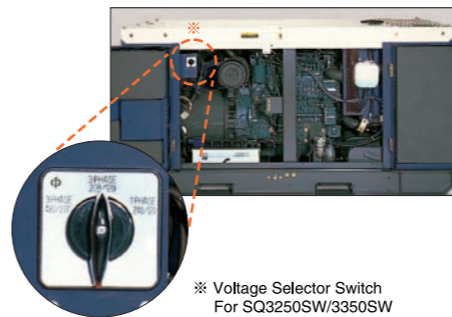


Safe Enclosure

Large, removable doors feature heavy-duty steel hinges and recessed locking door latches safeguard against unauthorized use, allow safe, unattended operation and easy maintenance.

Easy One Side Maintenance

Engine oil and coolant drain extensions are provided to ease regularly scheduled maintenance. Oil gauge, oil filter, oil replenishment port, fuel filter, water reserve tank, battery and air cleaner are all located on one side for quick inspection and maintenance.



※ Voltage Selector Switch For SQ3250SW/3350SW

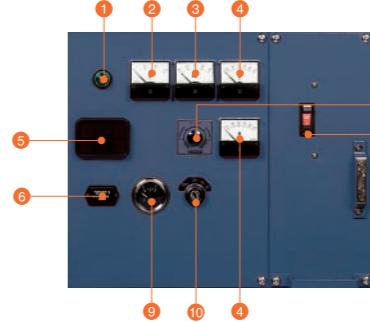
Stable Load

Excellent Load Characteristics

The PMG (Permanent Magnet Generator) exciter system responds instantly to load changes. Quick response automatically provides stable power to sensitive equipment.

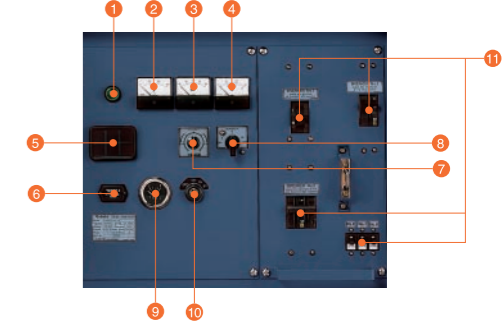
Control Panel

Single Phase (SQ-1140)



- 1 Pilot Lamp
- 2 A.C. Voltmeter
- 3 Frequency Meter
- 4 A.C. Ammeter
- 5 Monitor Lamp
- 6 Hour Meter

Three Phase (SQ-3350SW)

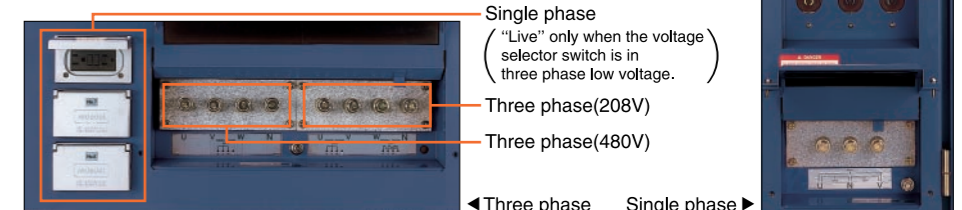


- 7 Voltage Adjuster
- 8 Ammeter Phase Selector Switch
- 9 Fuel Gauge
- 10 Key Type Starter Switch
- 11 Circuit Breaker

Receptacles & Output Terminals

For Optimum Safety

Terminals for high (480V) voltage and low (208V) voltage have been separated. (Three phase only)



Single phase
("Live" only when the voltage selector switch is in three phase low voltage.)

Three phase (208V)
Three phase (480V)

◀ Three phase Single phase ▶